

ART SLAVIN REVUE COMPANY

Formed in 1916 as Harry Clay's Musical Revue and Vaudeville Company (one of four variety companies operating on a four-week rotation basis around Clay's Sydney suburban and south-west New South Wales circuits), the troupe was led by Art Slavin. By around 1918/1919, it was being more often referred to simply as the Art Slavin Revue Company, the name by which it continued to be called up until the early 1920s.

ART SLAVIN REVUE COMPANY PERSONNEL (1918-1925)

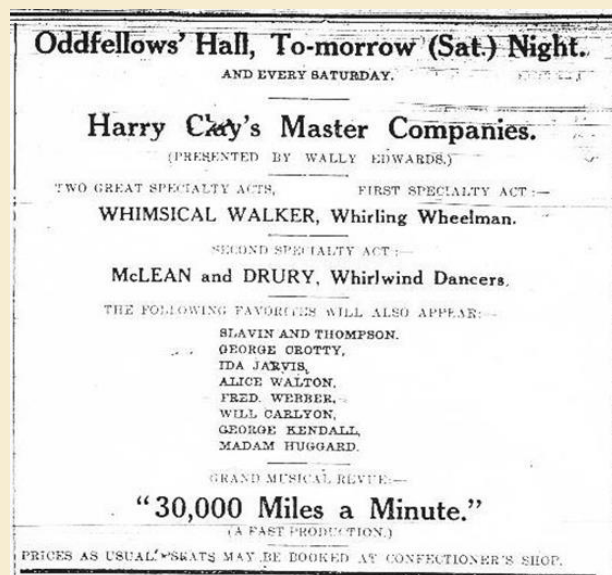
All dates shown below are established years only. In some instances, people may have been associated with the company prior to or after the dates shown, but these periods have not yet been identified.

Performers with an asterix [*] beside their name were also involved with the Harry Clay's 1918 Queensland touring company, led by Art Slavin.

- 1. Principal performers with the troupe** incl. Molly Ambrose (1918), Phil Ashford (1919), Doris Baker (1919), Bertha Beaumont (1919), Ivy Bowman (1916), Lalla Brooke* (1917-1918), Clyde Cameron* (1918), Will Carlyon (1917-1918), Denis Carney (1919), Will Cass (1916), Maurice Chenoweth (1919), Bert Corrie (1919), George Crotty* (1918-1919), Margaret Darragh (1919), Alec Davidson (1918), Ivy Davis (1919), Ruby Day (1919), Kathleen Desbro (1919), Alf Edwards (1918), Courtney Ford (1919), Nat Hanley (1918), Gladys Holmes (1919), Ida Jarvis* (1917-1919), Rosalie Lanart (1919), Ernest Lauri (1919), Will Liddle (1918-1919), Frank Mantana (1919), Elsie Morris (1919), Maisie Posner (1918-1919), Paul Pry (1919), Grace Quine (1919), Amy Rochelle (1918), Wal Rockley* (1918-1919), Hal Scott (1919), George Sorlie (1917-1918), Iris Taylor (1916), Lily Thompson (1915-1925), Pinkie Waine (1919), Alice Walton (1918), Bert Warne (1919), Fred Webber (1918).
- 2. Special guest or occasional artists** incl. The Black and White Duo (1917), The Four Kings* (1918), The Gibson Girls (1919), Little Willie (1919), Stewart and Lorraine (1919).
- 3. Musicians, music directors and other associated practitioners** incl. Mary Chesney* (music director, 1918).

SEE ALSO

- [Art Slavin](#) (Slavin & Thompson)
- [Harry Clay](#)
- [Harry Clay's No 1 Musical Comedy Co](#)



Lithgow (NSW)

Lithgow Mercury 18 Jan. (1918), 5.

FURTHER REFERENCE

- Kitching, Harry. "Harry Clay's Bridge Theatre, Newtown." AV: 15 Feb. 1918, n. pag.
--- "Harry Clay's Bridge Theatre, Newtown." AV: 3 May 1918, n. pag.
--- "Harry Clay's Bridge Theatre, Newtown." AV: 6 Sept. 1919, n. pag.
"Harry Clay's Company." TC: 20 May 1918, 6.

Last updated: 10/05/2011

Expanded and updated from the 2007 AustLit entry.

NB: The URL for this PDF will change each time it is updated. If you wish to cite or link to this record please use the following:
Australian Variety Theatre Archive • <http://ozvta.com/troupes-a-f/>